



112ABL63



112ABB63

## Application

- ✓ Hydraulic systems, pumps and presses
- ✓ Measuring needs with sudden or dynamic pressure changes
- ✓ Vibrating machineries, diesel engines
- ✗ Do not use directly for medias that are viscous, crystallizing and corroding copper alloy.

## Special Features

- ✓ Re-calibratable and re-adjustable
- ✓ Reasonable price for a distinguished quality
- ✓ No leakage guaranteed
- ✓ High quality spare parts

## Description

InstruMate group of oil filled pressure gauges covers a series of oil-filled pressure gauges efficient for plants or machineries with pulsating pressures or mechanical vibrations. As sensitive a pressure gauge as might be, vibration threatens its long life span and that is the time InstruMate 112 series come into action.

Shocks will not be a serious problem when InstruMate 112AB is responsible for damping their effect.

Since oil filled pressure gauges have a copper alloy connection, considerations about their corrosion and clogging is recommended.

The model 112AB is constructed from a matte stainless steel case with an outside bayonet bezel. This model has a very strong design. This manometer with special design of case allows you easy panel installation by clamps.

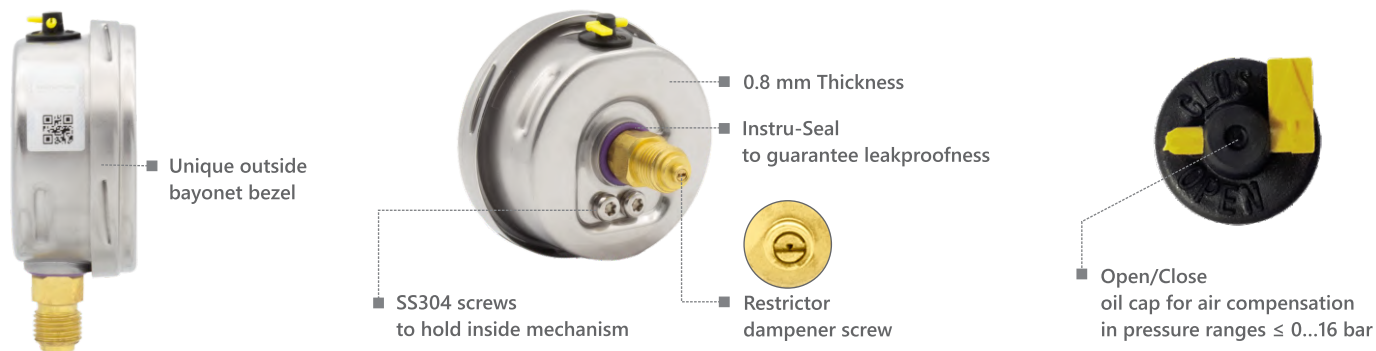
All InstruMate pressure gauges have geometrically balanced dial designs, thus a much easier reading experience.

## Default Specification

Design	Nominal sizes in mm
EN 837-1	63, 100
Process Connection	
Brass NS 63: G ¼ NS 100: G ½ (bottom connection and center back connection)	Bottom connection: 112ABL Center back connection: 112ABB
Temperature Effect	Pressure Limitations
$\pm 0.04 \times (t_2 - t_1) \% \text{ of the span}$ $t_1$ is the Reference temperature in degrees celsius. $t_2$ is the Ambient temperature in degrees celsius.	Steady: 75% of full scale Fluctuating: 65% of full scale Over-Pressure: 100% of full scale
Scale Range	Permissible Temperature
NS 63: 0...1 bar to 700 bar NS 100: 0...0.6 bar to 700 bar Vacuum & compound ranges	Ambient: -20...+60 °C Medium: +65 °C Maximum
Pointer	Pressure Element
Aluminum, Black Micro-adjustable pointer for 100mm	Copper alloy C-type for $\leq 60\text{bar}$ Helical for $> 60\text{bar}$
Filling oil	
Glycerin	
Pressure units	Accuracy
bar/psi	1.6% of full scale
Window	Dial
Instrument Glass	Aluminum
Case	Movement
Matte SS304 (Outside bayonet)	Copper alloy

112ABL63

112ABB63

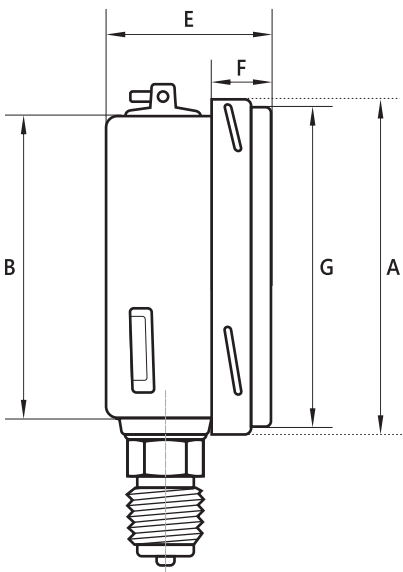
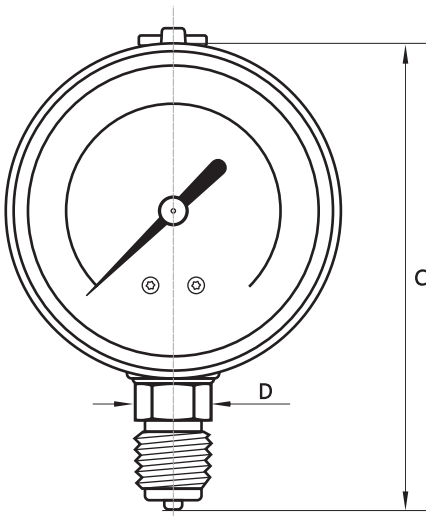


Options

- ✓ Silicon oil or not filled with oil
- ✓ Dial design as per request
- ✓ Requested process connections other than stated in the table

Dimensions (in mm)

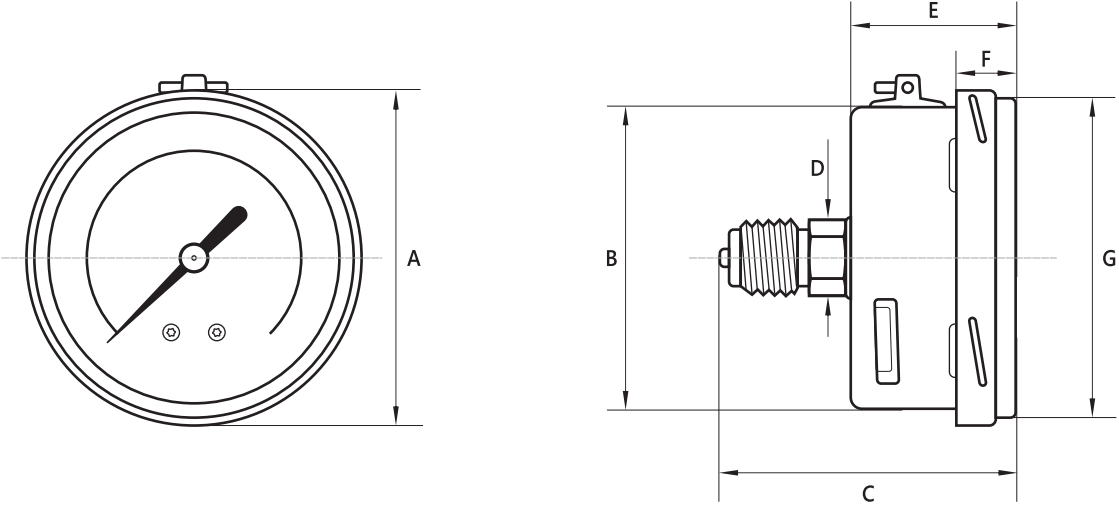
■ DS 63, 100 Bottom Connection



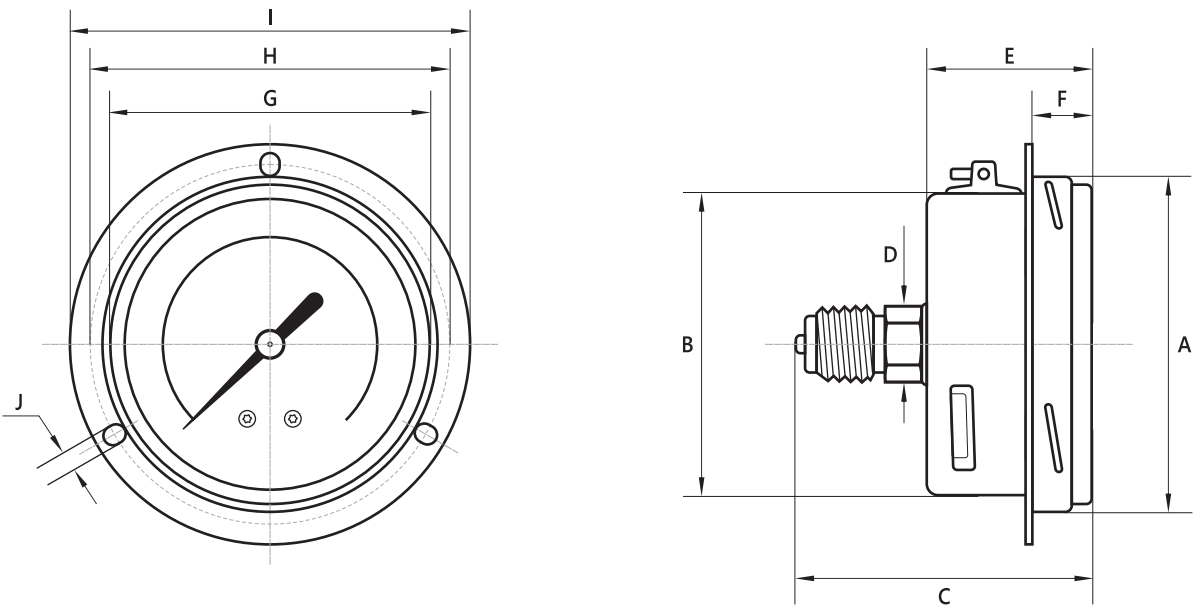
112ABL

Nominal Size	A	B	C	D	E	F	G	KG
63	69.3	62	92	14	33.5	12.2	67	0.24
100	108.6	99	139	22	42	15	105.8	0.63

■ DS 63, 100 Center Back Connection



■ DS 63, 100 Center Back Connection with Front Flange



112ABB

Nominal Size	A	B	C	D	E	F	G	H	I	J	KG
63	69.3	62	61	14	34	12.5	67	78	87.5	4.6 × 6.5	0.25
100	109	99	78.5	22	42	15	106	115	132.2	5.5 × 8	0.65

Thread Type	Code
NPT	N
BSPP (G)	B
BSPT	Z
Metric	M

Thread Size	Code
1/4	4
1/2	2
3/8	3
1/8	8
for metric sizes write the number	M20×1.5

### How To Order

	Product Group Name	Model	Mounting	Nominal Size	Thread Type	Thread size	Scale Range	Options
<b>Example:</b>	Oil filled Pressure Gauge	112AB	L	63	B	4	0...16bar-psi	–

Or simply order by item number on the basis of your previous purchases.

# InstruMate®

InstruMate Co, Limited

 [www.Instrumate.com](http://www.Instrumate.com) | 
  [info@Instrumate.com](mailto:info@Instrumate.com)